

MapCollaborator

Shared Data Made Easy

GreenInfo Network's MapCollaborator is a wiki for easily sharing and editing map data. It can be customized to meet almost any need and is designed to support users who need reviews of data to be quick and simple.

FEATURES

- Allows users to review data, post notes, draw new features, edit over current features or upload GIS files for immediate display
- Wiki function shows all users' proposed edits and notes, if desired
- Base maps include streets, terrain, satellite views
- Additional base map data can be turned on or off
- Selections of data can be exported to spreadsheets or printed as PDFs
- All drawn or edited features are downloadable as GIS files
- User edits create overlay data, and don't change base data
- Can be set up as a public web site or with a required login
- Custom features are available

MapCollaborator is best used for reviewing a single data layer, with the option for one or two additional reference layers.

USE MAPCOLLABORATOR TO REVIEW AND EDIT DATA:

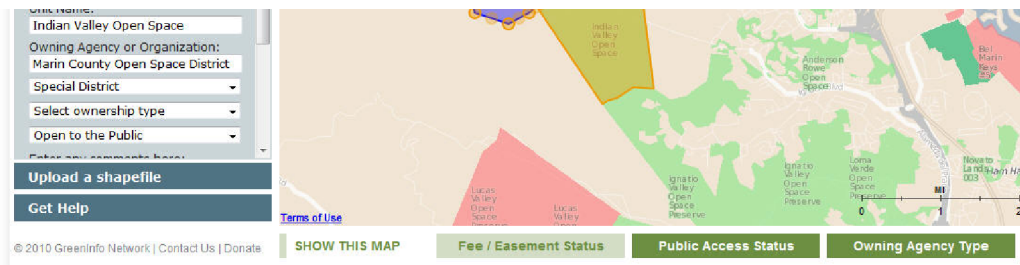
Point locations, such as project sites, events, facilities, organization locations and more

Area shapes, including parks or other features, impact zones, jurisdiction boundaries, or any polygon

Lines, such as trails or other routes

MapCollaborator is best for simple editing and does **not** replace GIS for creating and revising robust data.

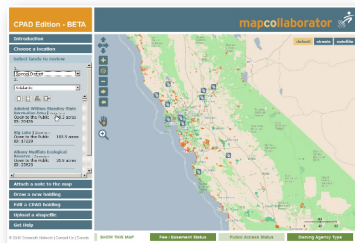
For each project, a MapCollaborator EDITION is created, separate from all other instances and allowing for any customization.



GET MapCollaborator

MapCollaborator is an affordable solution – costs depend on data used and how much customization you need. Email GreenInfo Network at gin@greeninfo.org with your project description to get a quote.

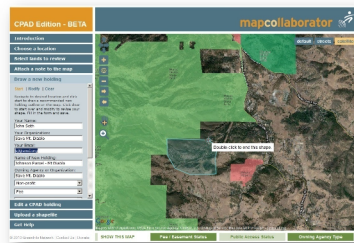
Choose What to View



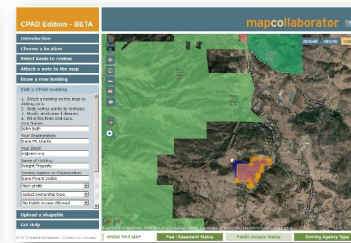
Post a Note



Create a New Shape



Edit an Existing Shape



Upload Your GIS Files*



*Zipped ESRI shape files, KML and GPS tracks can all be uploaded for immediate display



GreenInfo Network is non-profit, tax-exempt organization providing Geographic Information Systems (GIS) along with other mapping and information technology support to public interest organizations and agencies in California and the U.S. Contact us for more information on how we can help you with your needs – gin@greeninfo.org

www.greeninfo.org

www.mapsportal.org

email: gin@greeninfo.org